

## 24-Hour Realtime Surveillance and Protection of your Vehicle is Closer Than you Think.....

The **StreetEagle** Vehicle Tracking System is an onboard module that communicates wirelessly from your vehicle to the internet to update your-vehicle's current status.

StreetEagle is **GPS on steroids**, hosting some of the latest technology in GPS vehicle tracking systems.

With over 10 years of experience in GPS vehicle tracking, StreetEagle has led the commercial industry with its **award winning** GPS Fleet Management System.

### StreetEagle GPS Benefits

StreetEagle's **24/7 real-time monitoring** and protection provides assurance the vehicle is secure and gives vehicle owners peace of mind.

With **detailed reports and maps**, StreetEagle highlights unsafe driving habits that can be used to address driver safety issues.

StreetEagle can help **reduce insurance rates**, gas and maintenance costs as well as other transportation related expenses.

StreetEagle can help reduce anxiety and reassure the vehicle owner of **driver safety**, particularly for elderly or teenage drivers.

The comprehensive reports can be used as a learning tool to **improve driving performance**.

**Realtime Vehicle Location**  
**Vehicle Location History**  
**Advanced Tracking Features**  
**Map Views · Satellite Images**  
**Advanced Reports**

[www.streeteagle-gps.com](http://www.streeteagle-gps.com)



InSight USA Headquarters  
23330 Cottonwood Pkwy, Suite 333  
California, MD 20619

Toll Free: 866-658-1191



Distributed by AAMP of America™



# Advanced GPS Vehicle Tracking



**Keep an eye on them...**  
**Even when they're out of sight.**



# GPS Vehicle Surveillance

StreetEagle GPS  
Advanced 24-Hour  
Monitoring is Easy as  
One, Two, Three...

## Step ONE

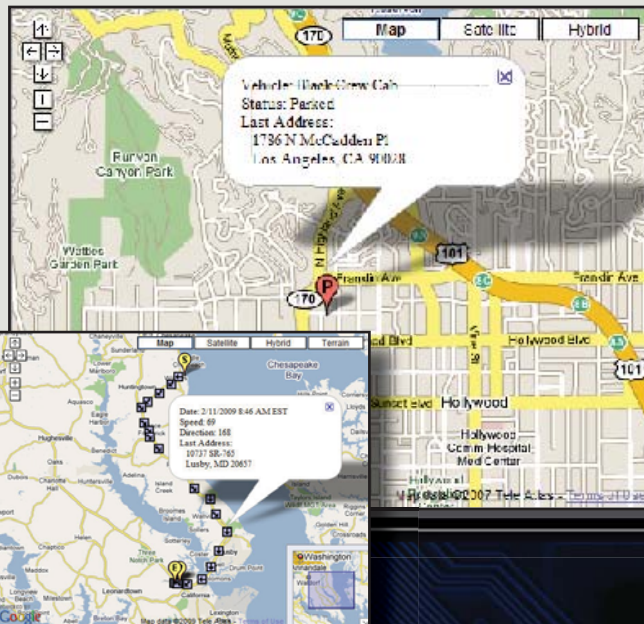
Purchase StreetEagle GPS.

## Step TWO

Install StreetEagle GPS.

## Step THREE

Activate to Track Your Vehicle.



### Realtime Vehicle Location

- **Locate Now:** Retrieve immediate location and status of your vehicle.
- **Automatic Updates:** Automatically reports vehicle location as frequently as every two minutes while moving.
- **Multiple Vehicles:** Monitor multiple vehicles simultaneously.

### Vehicle Location History

- **Breadcrumb Trail:** Complete vehicle history displayed on a map.
- **Complete Details:** Date, Time, Speed, Direction, Address, Parked, Stopped, and Started.

### Advanced Tracking Features

- **Security Alert:** Combine with existing security sensors for immediate alerts.
- **Speeding Alert:** Instantly be alerted when vehicle exceeds a predetermined speed.
- **Geofence Alert:** Instantly be alerted when Vehicle enters or exits a predetermined location.
- **Tow Alert:** Instantly be alerted when vehicle is being towed.
- **Battery Backup/Alert:** Reports even when power is cut or unplugged. Instantly be alerted when power is disconnected.
- **Remote Door Unlock:** Unlock vehicle from any Internet browser.
- **Remote Starter Disable:** Disable vehicle starter from any Internet browser.

StreetEagle's premier mapping application allows you to view vehicle location on a standard atlas map, a satellite image, or hybrid of both. Pan and zoom to view fully detailed satellite images of your vehicles' present or past location activity.

### Map Views

- **Street Maps:** Zoom and pan to see vehicle location.
- **Satellite Imagery:** Real satellite images can be combined with street maps.

### Also Available, StreetEagle Professional for Commercial Fleets

StreetEagle Professional is the full-featured Business version of StreetEagle, providing the advanced management features needed for Service, Delivery, and Transportation fleets.

- Employee and Job Time Accounting
- Proof of Service
- Vehicle Maintenance
- Unnecessary Vehicle Idling
- Unauthorized Vehicle Use
- Advanced Reporting and Alerts
- Vehicle Systems Monitoring for PTO's, Switches, and Sensors

### StreetEagle GPS Tracking Service Plans

Packages starting as low as \$15 a month.

	Lite	Standard	Advanced	Professional
Automatic Location Updates (minutes)	Stops Only	5	2	2
"Locate Now" Services (pings)	50	100	unltd	unltd
Vehicle Location History Access Term (days)	7	30	180	180
Security Alert		√	√	√
Speeding Alert		√	√	√
Geofence Alert		√	√	√
Tow Alert		√	√	√
Remote Door Unlock			√	√
Remote Starter Disable			√	√
Vehicle Maintenance Alerts				√
PTO / Sensor Monitoring				√
Advanced Management Reports				√
Advanced Management Alerts				√
Monthly	\$15	\$27	\$35	Starting at \$35

Please consult your dealer on hardware and installation options.

For more information on  
StreetEagle Professional, please visit  
[www.StreetEagle-GPS.com/Professional](http://www.StreetEagle-GPS.com/Professional)