



Improve Accountability and Cut Waste with StreetEagle - the Ultimate in GPS Tracking.

StreetEagle is an advanced, easy to use GPS tracking solution that gives you immediate control of your mobile workforce. Imagine knowing exactly when and where your employees are working, and what they are doing with your vehicles and equipment. Never again second-guess if overtime hours or job times are accurate, or what your employee may be doing with your vehicles after work. When you **KNOW**, you are in control.



Service and Installation **Limousine** Waste Management **Public Safety** Public Works **Ambulance/EMS** Delivery and Transportation

'Dots on a map' are only the beginning. StreetEagle GPS Tracking provides the real business intelligence you need to easily:

- Verify payroll hours and overtime
- Verify actual arrival and departure times
- Ensure proof of service
- Eliminate side jobs and unnecessary vehicle use
- Cut vehicle operating and fuel expenses

StreetEagle is not a 'one size fits all' solution, but a range of solutions that gives you just what you need.

- Web, Mobile, Professional, or Enterprise Versions
- Industry Specific Features and Reporting Options
- Real-Time Alerts and Notifications
- Vehicle Maintenance Alerts

Secure. Reliable. Proven Performance.

StreetEagle's hardware components are tamper resistant, rugged and reliable. Unlike many GPS tracking systems that can be easily unplugged or otherwise disabled, a StreetEagle installation keeps your mobile workforce accountable.

-) Based on a proven, secure hardware platform currently installed in over one million vehicles worldwide - and rated at over 100,000 hours MTBF (mean time between failures.)
-) Compatible with any GSM/GPRS cellular data network in operation worldwide.
-) Over 99.9% GPS tracking server uptime.
-) Lifetime hardware warranty with tracking service.

Developed and Supported by a GPS Tracking Industry Leader - InSight USA.

InSight USA has proudly dedicated over eleven years of GPS systems expertise to providing mission critical solutions for the Public Safety, EMS, and Commercial industry. For our customers, this means:

-) Full featured, mature, highly reliable GPS-based tracking solutions and services.
-) Comprehensive 24/7 customer support - online and on-call.
-) Regular software platform upgrades available with tracking service.
-) Special requirements, integration and customization can be readily implemented.

Powerful Reporting. Vital Intelligence About Your Mobile Workforce.

StreetEagle dramatically extends the power of GPS tracking with the most comprehensive, high detail reporting options available today - a flexible, powerful strategic intelligence platform for any mobile workforce.

General Management Reports:

-) Complete Vehicle Activity Report
-) Vehicle Idling Report
-) Vehicle Parked/Stopped Report
-) Vehicle Speeding Report
-) State-by-State Fuel Tax Mileage Report
-) Vehicle Maintenance Management Report
-) Geographic Analysis Report

Advanced Management Reports:

-) **Virtual Time Clock Report** Eliminate payroll inaccuracies and unwarranted overtime. Allows you to quickly and easily confirm actual hours worked for your entire mobile workforce.
-) **Job Time Report** Detailed listing of all time spent at known job sites.
-) **PTO Sensors/Proof of Service Report** Accurately verify service has been completed and resolve customer disputes.

Vehicle	Total Engine Operating Time	Total Time in Transit	Total Stopped / Idling Time	% Stopped / Idling	% in Transit
T1180	21:59:06	17:23:06	04:36:00	20.9	79.1
T1182	21:55:44	18:41:42	03:14:02	14.7	85.3
T1183	17:19:42	13:25:16	03:53:26	22.5	77.5
T1184	20:14:06	16:42:30	03:31:36	17.4	82.6
T1185	10:49:08	12:19:10	03:29:58	22.1	77.9
T1186	16:59:48	13:24:28	04:35:20	27.6	72.4
T1187	27:39:28	16:46:54	10:52:34	64.3	35.7
T174					

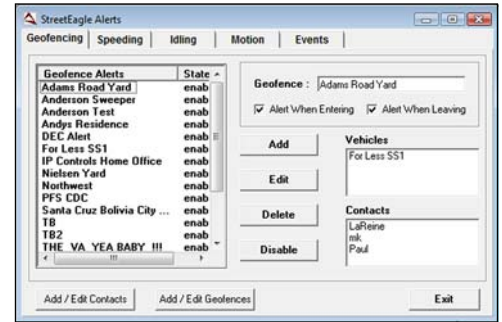
Date	Time	Duration	Event	Location
8/4/2008	6:05:17 AM	00:00:00	PTO1 On	528 S Cattan St, Chicago, IL 60607
	6:32:16 AM	00:04:02	PTO1 On	505 W Roosevelt St, Chicago, IL 60607
	6:34:45 AM	00:03:15	PTO1 On	707 S Jefferson St, Chicago, IL 60607
	6:46:12 AM	00:03:28	PTO1 On	805 S La Salle St, Chicago, IL 60605
	6:58:44 AM	00:04:07	PTO1 On	368 S Westmore Ave, Chicago, IL 60616
	7:10:44 AM	00:03:05	PTO1 On	8 E 28th St, Chicago, IL 60616
	7:23:57 AM	00:09:40	PTO1 On	3421 S Halsted Ave, Chicago, IL 60616
	7:33:29 AM	00:09:16	PTO1 On	3427 S Halsted Ave, Chicago, IL 60616
	8:07:27 AM	00:06:16	PTO1 On	3053 S Loomis Ave, Chicago, IL 60616
	8:21:40 AM	00:04:54	PTO1 On	3727 S Langston St, Chicago, IL 60609
	8:36:08 AM	00:09:00	PTO1 On	807 W 47th St, Chicago, IL 60609
	8:48:47 AM	00:09:34	PTO1 On	5202 S Halsted St, Chicago, IL 60609
	9:03:31 AM	00:13:20	PTO1 On	1644 W 48th St, Chicago, IL 60609
	9:30:03 AM	00:06:28	PTO1 On	2320 W 48th St, Chicago, IL 60609

Date	Time	Activity	Duration	Location Type	Address
8/4/2008	6:30:51 AM	Stalled	00:00:00	Shop / Office	122126.5 - On Site Sanitation Office
	6:30:52 AM	Parked	00:01:04	Shop / Office	122126.5 - On Site Sanitation Office
	6:40:36 AM	Parked	00:00:36	Shop / Office	122126.5 - On Site Sanitation Office
	6:59:20 AM	Stopped / idling	00:17:08	Unknown	122158.1 - 172 Matthews Dr NE, Minneapolis, MN 55434
	7:39:52 AM	Stopped / idling	00:36:04	Unknown	122145.0 - 12015 Madison Rd NE, Minneapolis, MN 55448
	8:33:40 AM	Stopped / idling	00:36:10	Unknown	122155.9 - 1818 Ch-16, Andover, MN 55004
	9:10:16 AM	Parked	00:01:00	Unknown	122155.9 - ON GARAGE NE NEAR CR-116, Andover, MN 55004
	9:15:00 AM	Parked	00:02:14	Unknown	122155.9 - ON GARAGE NE NEAR CR-116, Andover, MN 55004
	9:24:16 AM	Parked	00:04:22	Unknown	122156.5 - ON CR-76 NEAR CR-116, Minneapolis, MN 55448
	9:28:38 AM	Stopped / idling	00:09:14	Unknown	122157.5 - ON CR-76 NEAR CR-116, Minneapolis, MN 55448
	10:30:59 AM	Stopped / idling	00:09:04	Unknown	122158.8 - ON CR-76 NEAR CR-116, Minneapolis, MN 55448
	10:47:54 AM	In Transit	-	Unknown	122220.0 - ON CR-76 NEAR CR-116, Minneapolis, MN 55448

Be Alerted. Stay Notified. Respond Fast.

When something goes wrong on the road or on the job, rapid notification makes all the difference. StreetEagle alerts you instantly when it detects a predefined condition that requires an immediate response.

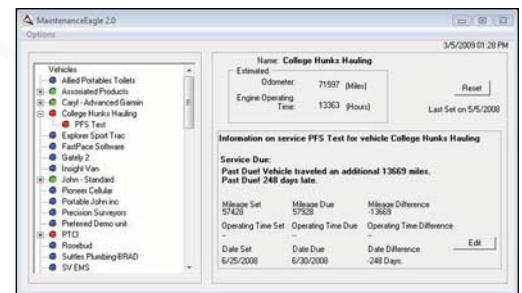
- Alerts for excessive speeding or idling, vehicle alarm activation, after hours vehicle use and many other violation events.
- Automatic alerts when a vehicle requires service.
- Full geofence entry/exit support.
- Alerts sent via e-mail and/or mobile text message.



Vehicle Maintenance Reminders.

StreetEagle provides reports and reminder alerts for upcoming scheduled vehicle maintenance events.

- Unlimited scheduled maintenance profile definitions for oil changes, tires, inspections, etc.
- Maintenance can be triggered by elapsed mileage, engine operating time, or calendar time.



Full Featured Business Mapping Software.

StreetEagle uses the most robust mapping software available. Mapping options include Microsoft MapPoint, Microsoft Virtual Earth, Google Earth, Google Maps, ESRI GIS Maps, and MapFrame Mapping.



StreetEagle GPS Tracking with Garmin Navigation.

StreetEagle with Garmin Navigation is designed for managers who want the power of advanced GPS tracking, route dispatching, driver status reporting, customized two-way messaging, and in-vehicle navigation in an all-in-one package.

- Garmin Routing** Routes are created within StreetEagle and automatically 'pushed' over the air directly to the Garmin navigation units in the vehicle.
- Garmin Messaging** Communicate with drivers in the field by sending messages from the StreetEagle Software to the in-vehicle Garmin Unit.
- Driver Status** Drivers can easily inform fleet managers/dispatch of their status in the field with the push of a button.



Pick The StreetEagle That's Right for You.

InSight USA offers a complete range of StreetEagle service plans, each designed to provide an efficient and fully optimized GPS tracking solution for any size fleet. Web, Professional, or Enterprise, each plan includes a seamless upgrade path, so as your business grows, so can the capabilities and features included in the StreetEagle Software.

StreetEagle Version	Web	Professional	Enterprise
Mapping Software	Google Maps	MS MapPoint or Google Earth	MS MapPoint or Google Earth
Update Frequency (Moving/Idling)	5/10 min.	2/5 min.	2/5 min.
Historical Data Storage (months)	1	6	Unlimited
Real-Time Vehicle Location and Status	✓	✓	✓
Historical Bread Crumb Mapping	✓	✓	✓
Store and Forward Data	✓	✓	✓
Vehicle Routing and Directions		✓	✓
Integrated Location Data		✓	✓
Unlimited Vehicle Groups		✓	✓
Vehicle Equipment Monitoring (2 PTO or switch signals)		✓	✓
Multi Level User Privileges			✓
Remote Door Unlock	✓		
Remote Starter Disable	✓		
Optional Hardware Integration			
Garmin Personal Navigation Device		Optional	✓
Asset Barcode Scanning		Optional	✓
Temperature Sensing		Optional	✓
Management Reports			
Complete Vehicle Activity Reports	✓	✓	✓
Vehicle Idling Reports		✓	✓
Vehicle Parked/Stopped Reports		✓	✓
Vehicle Speeding Reports		✓	✓
Virtual Time Clock Reports		✓	✓
Job Time Reports		✓	✓
PTO Activation Reports		Optional	✓
PTO Duration Reports		Optional	✓
Fuel Tax Mileage Reports		✓	✓
Vehicle Maintenance Management Reports		✓	✓
Geographic Analysis Reports		✓	✓
Real-Time Text Message/E-mail Alerts			
Geofence Enter/Exit Alerts	✓	✓	✓
Speeding Alerts	✓	✓	✓
Vehicle Alarm Alerts	✓	✓	✓
Excessive Idling Alerts		✓	✓
Tampering Alarm Alerts		✓	✓
After Hours Vehicle Use Alerts		✓	✓
Vehicle Maintenance Alerts		✓	✓
Back Office Software Interface			✓
Crystal Report Integration			✓
Warranty	Life	Life	1 Year



23330 Cottonwood Parkway, Suite 333
 California, MD 20619
 (301) 866-1990 x 201 • Fax: (301) 866-1992
 sales@mds-inc.com

